

# NÓS SOMOS AS PEDRAS VIVAS

C.T.N. - 346

*A. Ferreira dos Santos*  
*Instr: Jorge Alves Barbosa*

Flauta

Clarinete - I

Clarinete - II

Saxofone Alto

Saxofone Tenor

Trompete ad.lib.

Flisc. Soprano

Trompa

Trombone

Tuba

SOPRANOS

CONTRALTOS

TENORES

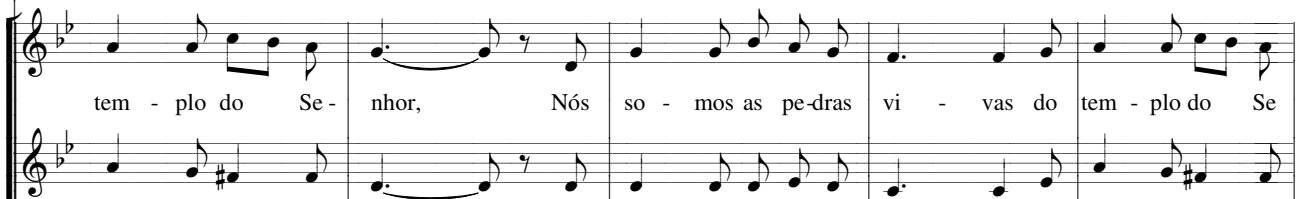
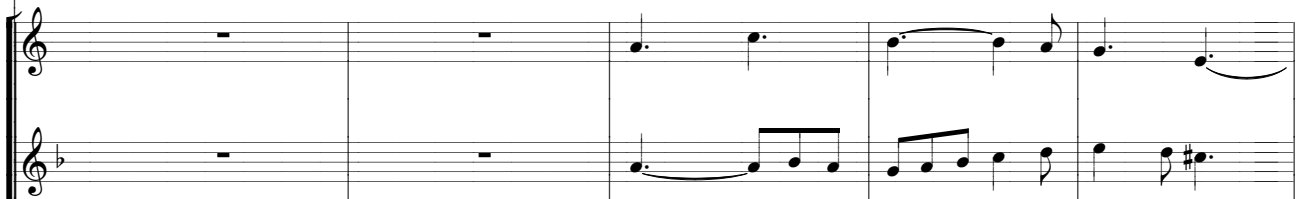
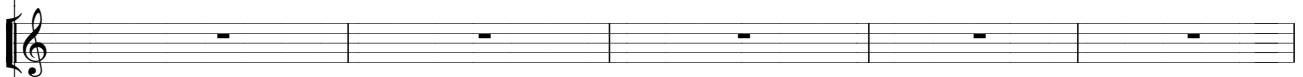
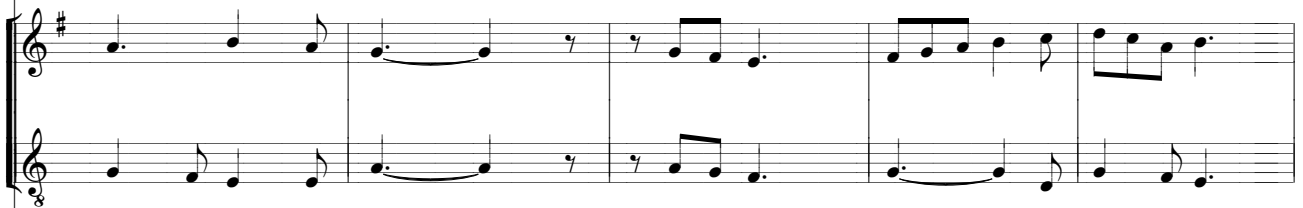
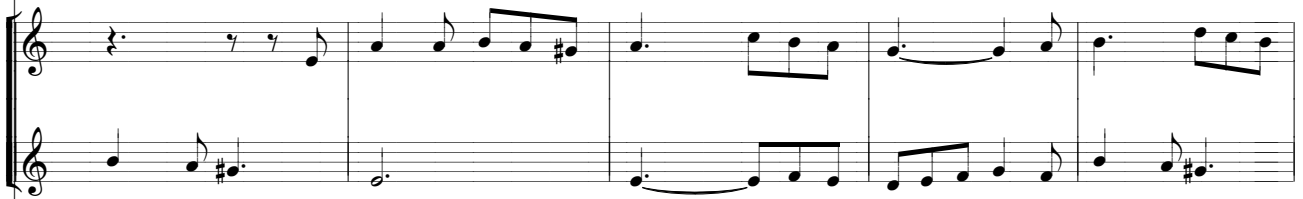
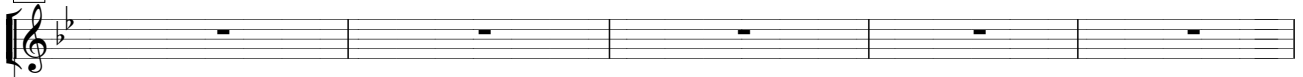
BAIXOS

Nós so - mos as pe-dras vi - vas do

Nós so - mos as pe-dras vi - vas do

Nós so - mos as pe-dras vi - vas do

Do



tem - plo do Se - nhor, Nós so - mos as pe-dras vi - vas do tem - plo do Se



tem - plo do Se - nhor, Nós so - mos as pe-dras vi - vas do tem - plo do Se



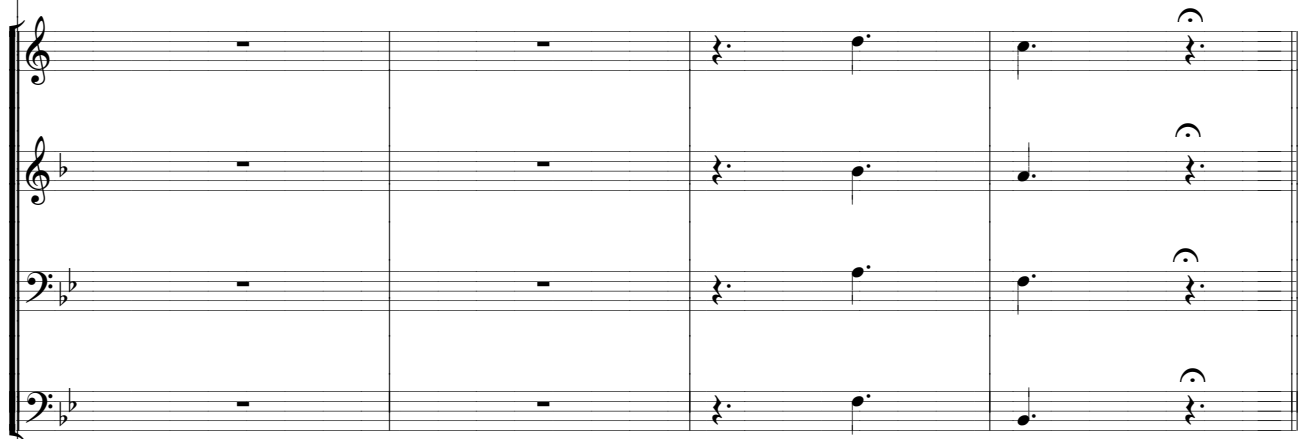
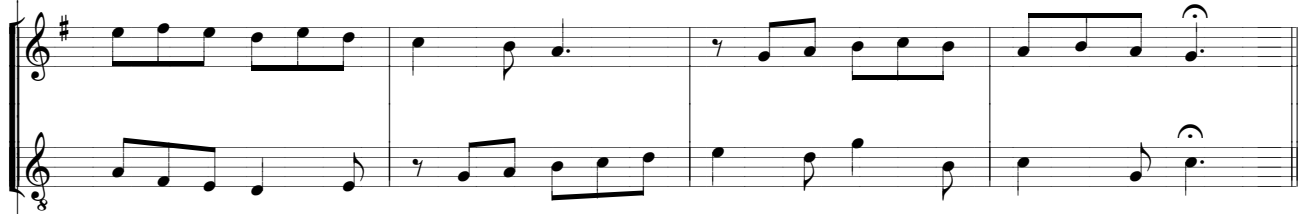
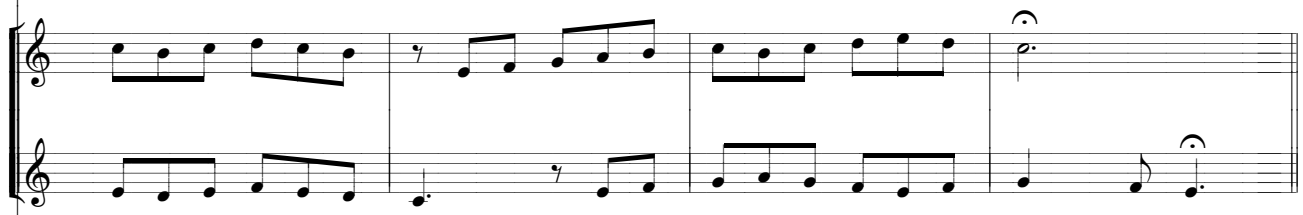
tem - plo do Se - nhor Nós so - mos as pe-dras vi - vas do tem - plo do Se

nhor. Po - vo sa - cer - do tal. I - gre - ja san - ta de Deus Nós

nhor. Po - vo sa - cer - do - tal, I - gre - ja san - ta de Deus Nós

nhor. Po - vo - sa - cer - do - tal, I - gre - ja san - ta de Deus, Nós


nhor, Po - vo sa - cer - do - tal, I - gre - ja san - ta de Deus, Nós



so - mos as pe - dras vi - vas do tem - plo do Se - nhor.




so - mos as pe - dras vi - vas do tem - plo do Se - nhor.

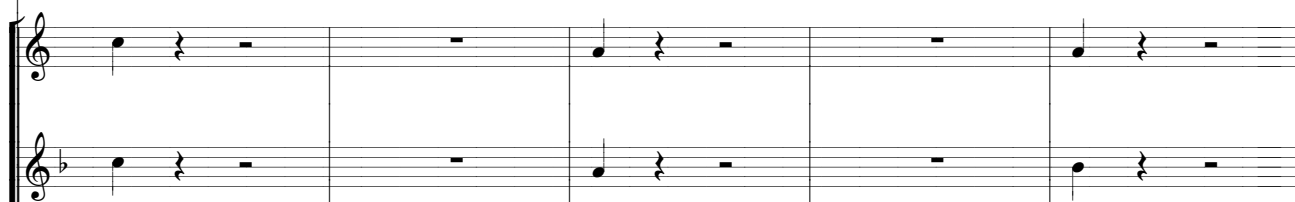
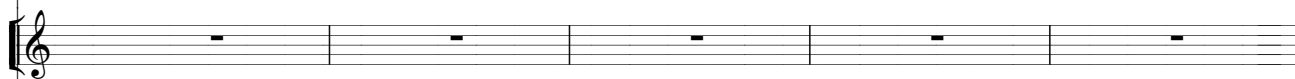
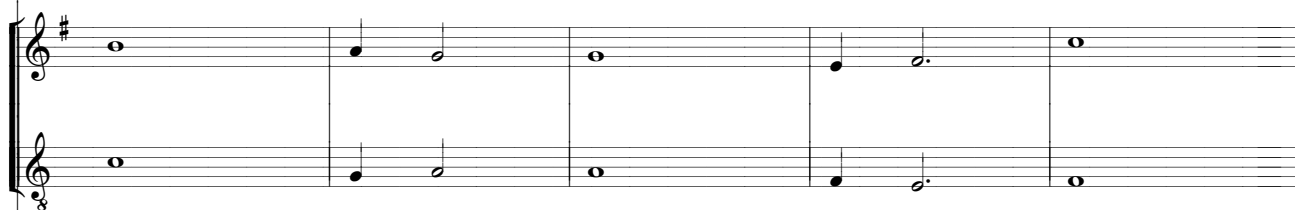
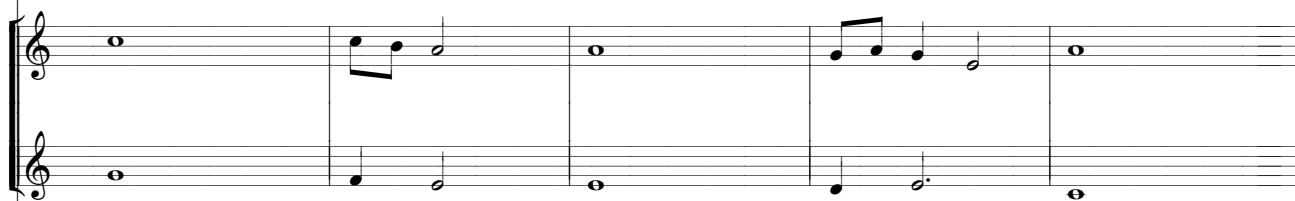
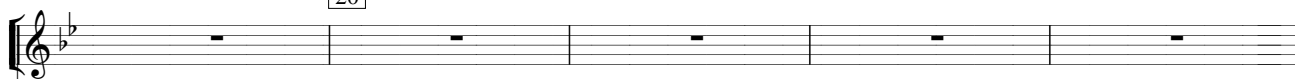


so - mos as pe - dras vi - vas do tem - plo do Se - nhor.

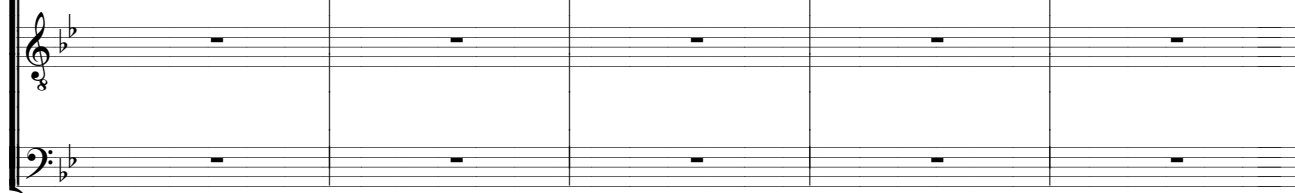
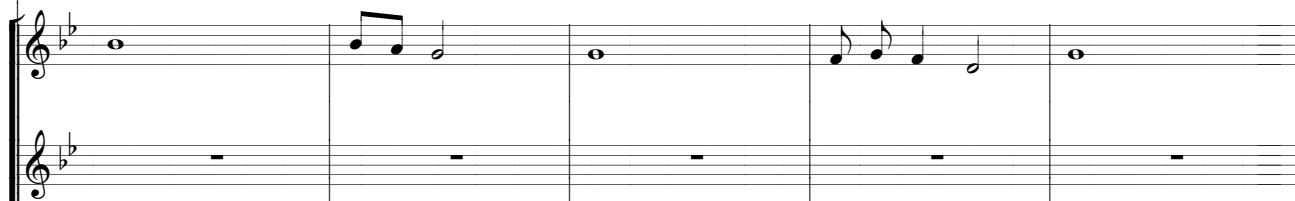


so - mos as pe - dras vi - vas do tem - plo do Se - nhor.

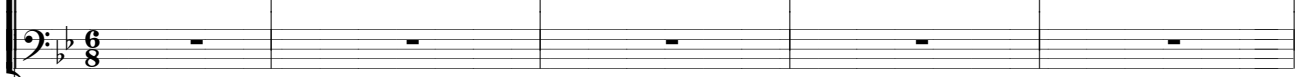
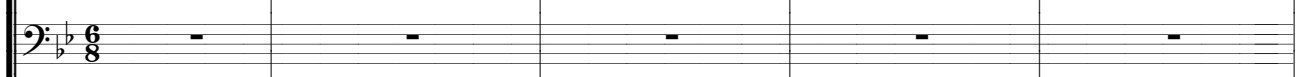
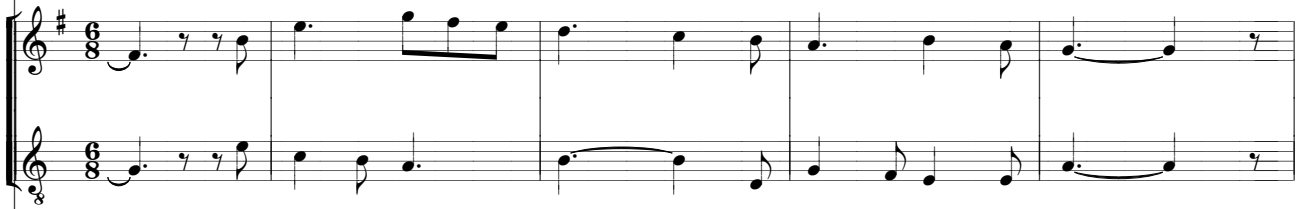
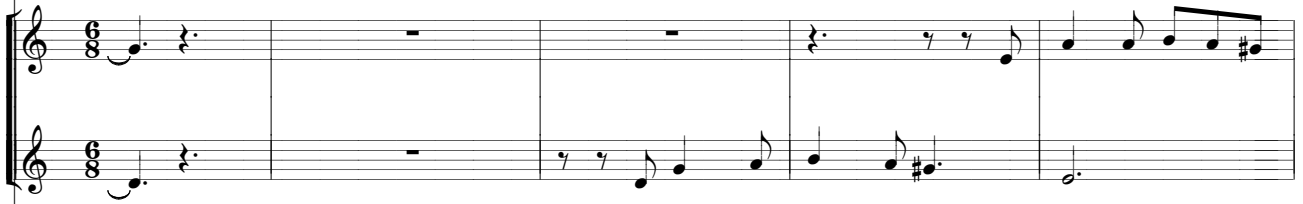




*Atacar o Versículo depois do acorde*



This page of a musical score, numbered 25, contains several systems of staves. The first system consists of a single staff with five measures of whole rests. The second system has two staves: the upper staff contains a melodic line with eighth and sixteenth notes, and the lower staff contains a bass line with quarter and eighth notes. The third system also has two staves, with a treble clef and a key signature of one sharp (F#) in the upper staff. The fourth system is a single staff with five measures of whole rests. The fifth system is a grand staff with four staves: the top two are treble clefs and the bottom two are bass clefs, all with a key signature of two flats (Bb). The sixth system has four staves: the top staff has a melodic line with eighth and sixteenth notes, while the other three staves (two treble and one bass) contain whole rests.



Do tem - plo do Se - nhor, nós





tal, I - gre - ja san - ta de Deus, Nós so - mos as pe - dras  
 tal, I - gre - ja san - ta de Deus, Nós so - mos as pe - dras  
 tal, I - gre - ja san - ta de Deus, Nós so - mos as pe - dras  
 tal, I - gre - ja san - ta de Deus, Nós so - mos as pe - dras

vi - vas do tem - plo do Se - nhor.

vi - vas do tem - plo do Se - nhor.

vi - vas do tem - plo do Se - nhor.

vi - vas do tem - plo do Se - nhor.