

# AVÉ MARIA

C.T. - 743


Louvai o Senhor, NS-4

Mário Silva


Arr: Jorge Alves Barbosa

5


Flauta




Clarinete - I




Clarinete - II




Saxofone Alto




Saxofone Tenor



Trompete ad.lib.




Flisc. Soprano



Trompa




Trombone




Tuba




SOPRANOS




CONTRALTOS



TENORES



BAIXOS



A - vé, Ma - ri - a, chei - a de

gra - ça, o Se- nhor é con- vos - co, ben di - ta sois vós en- tr as mu - lhe - res.

gra - ça o Se- nhor é con- vos - co, ben di - ta sois vós en- tre as mu - lhe - res.

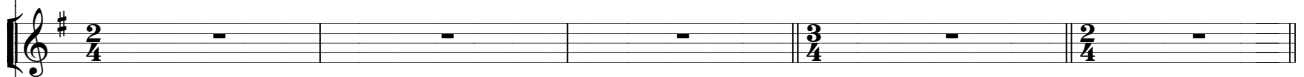
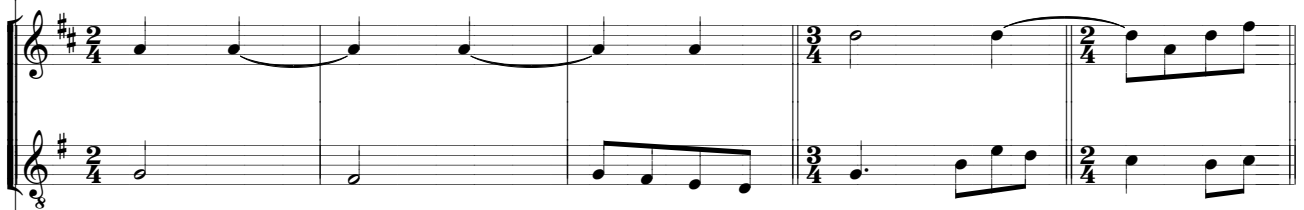
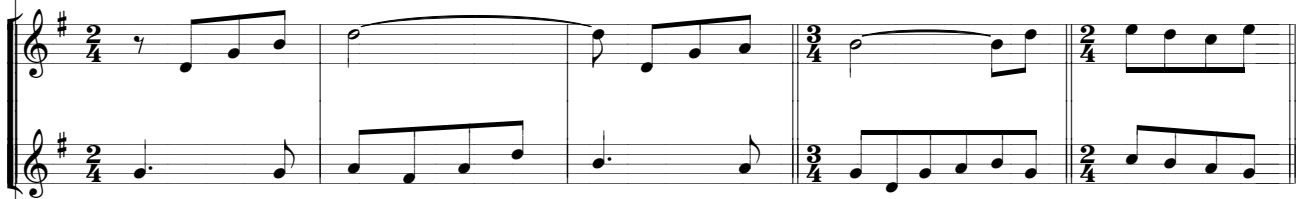
gra - ça, o Se- nhor é con- vos - co, ben di - ta sois vós en- tre as mu - lhe - res.

gra - ça o Se- nhor é con- vos - co, ben di - ta sois vós en- tre as mu - lhe - res.

The musical score for page 15 consists of several systems of staves. The first system includes a vocal line and piano accompaniment. The second system continues the piano accompaniment. The third system features a vocal line with lyrics. The fourth system continues the piano accompaniment. The fifth system features a vocal line with lyrics. The sixth system continues the piano accompaniment. The seventh system features a vocal line with lyrics. The eighth system continues the piano accompaniment. The lyrics are: "Estende teus braços a Ma-ri - a àquela que é a porta do Céu".

Estende teus braços a Ma-ri - a àquela que é a porta do Céu

Estende teus braços a Ma-ri - a àquela que é a porta do Céu



A - vé, Ma - ri - a, chei - a de gra - ça o Se - nhor é con -

A - vé, Ma - ri - a, chei - a de gra - ça o Se - nhor é con -

A - vé, Ma - ri - a, chei - a de gra - ça, o se - nhor é con -

A - ve, Ma - ri - a, chei - a de gra - ça, o Se - nhor é con -

vos - co, ben - di - ta sois vós en - tre as mu - lhe - res.

vos - co, ben - di - ta sois vós en - tre as mu - lhe - res.

vos - co, ben - di - ta sois vós en - tre as mu - lhe - res.

vos - co, ben - di - ta sois vós en - tre as mu - lhe - res.