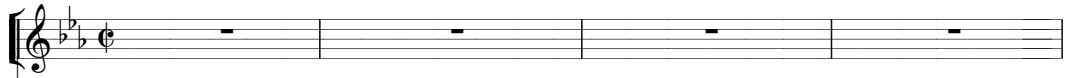


AVE VERUM CORPUS

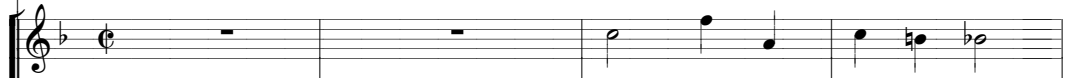
W. A. MOZART
Instr. Jorge Alves Barbosa

Adagio ♩ = 72

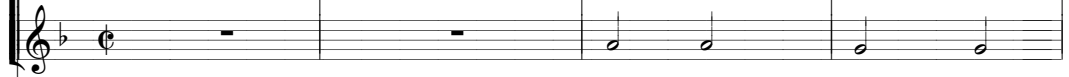
Flauta



Clarinete - I



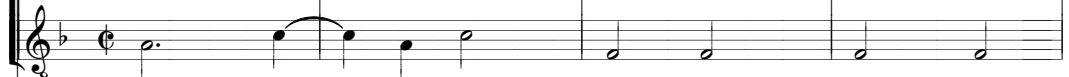
Clarinete - II



Saxofone Alto



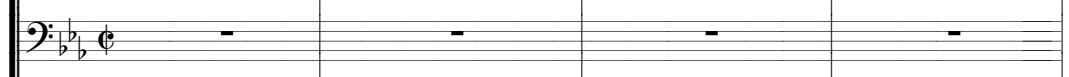
Saxofone Tenor



Trompa



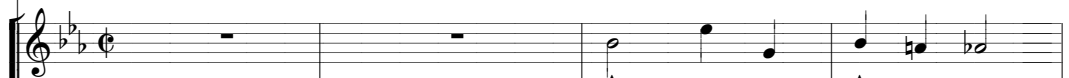
Trombone



Tuba

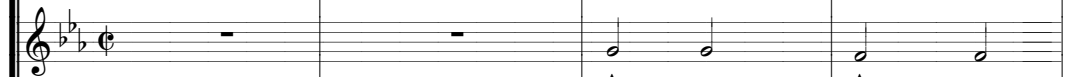


SOPRANOS



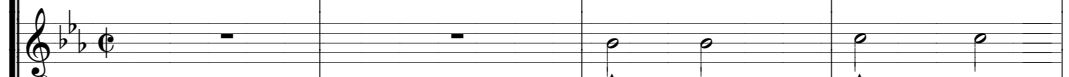
A - ve, A - ve,

CONTRALTOS



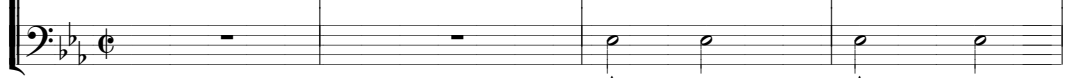
A - ve, A - ve

TENORES

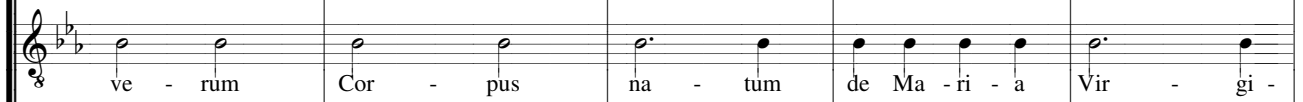
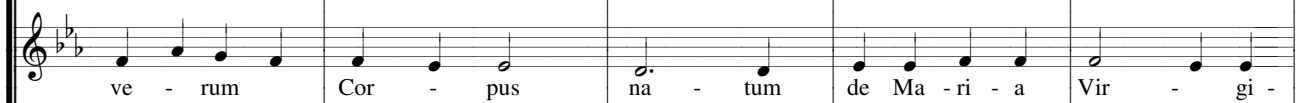
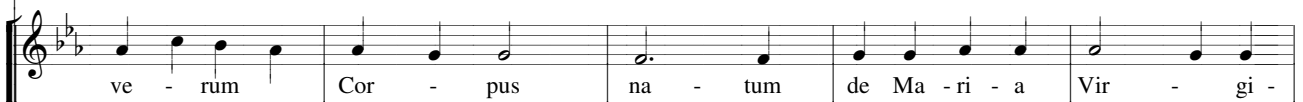
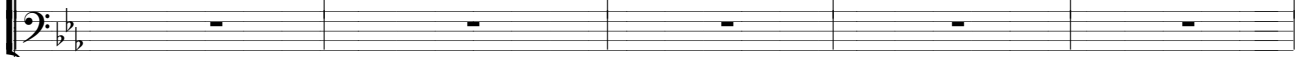
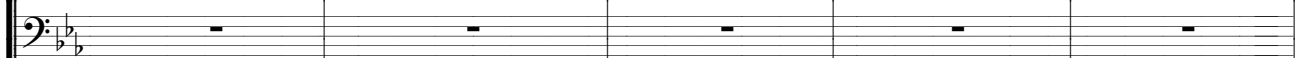
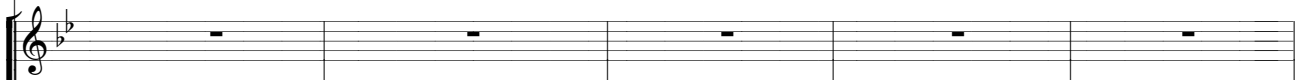
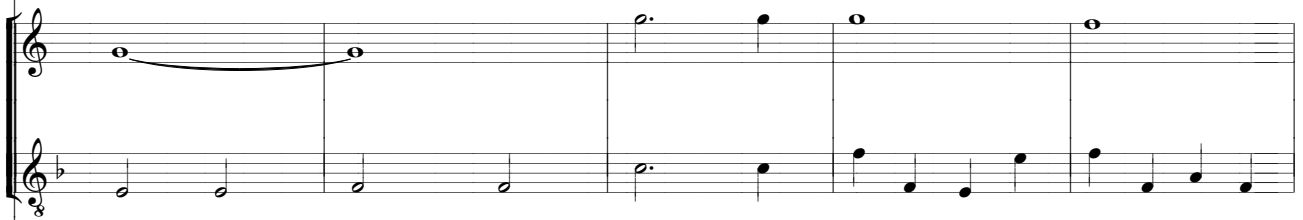
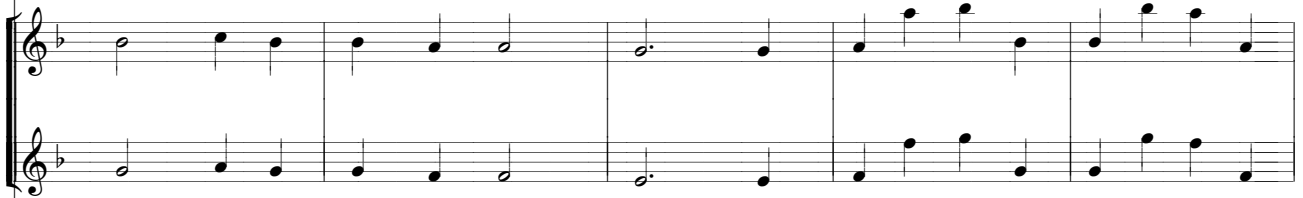


A - ve, A - ve

BAIXOS



A - ve, A - ve



Musical score for piano accompaniment, measures 19-24. The score is written in B-flat major (two flats) and 4/4 time. It consists of three systems of two staves each. The first system (measures 19-20) features a melodic line in the right hand with a slur over measures 19 and 20, and a bass line with a slur over measures 19 and 20. The second system (measures 21-22) continues the melodic and bass lines. The third system (measures 23-24) concludes the piano part with a final note in the bass line.

Vocal score with lyrics for measures 19-24. The score is written in B-flat major (two flats) and 4/4 time. It consists of four systems of two staves each. The lyrics are: "ce pro ho - mi - ne. cru - ce pro ho - mi - ne. cru - ce pro ho - mi - ne. cru - ce pro ho - mi - ne." The vocal line is written in the treble clef, and the bass line is written in the bass clef. The lyrics are aligned with the notes in the vocal line.

Musical score for page 25, featuring vocal and instrumental parts in B-flat major and 4/4 time. The score includes a vocal line with lyrics and three instrumental staves (piano, violin, and cello).

Vocal Line (Lyrics):
 Cu - jus la - tus per - fo - ra - tum un - da flu - xit cum
 Cu - jus la - tus per - fo - ra - tum un - da flu - xit cum
 Cu - jus la - tus per - fo - ra - tum un - da flu - xit cum
 Cu - jus la - tus par - fo - ra - tum un - da flu - xit cum

Instrumental Parts:
 - Piano: Accompanying the vocal line with chords and bass lines.
 - Violin: Playing a melodic line with slurs and accents.
 - Cello: Playing a supporting bass line.

san - gui - ne. E - sto no - bis prae - gus - ta - tum in

san - gui - ne. E - sto no - bis prae - gus - ta - tum in

san - gui - ne. E - sto no - bis prae - gus -

san - gui - ne. E - sto no - bis prae - gus -

mor - tis ex - a - mi - ne, in mor -
 mor - tis ex - a - mi - ne, in mor -
 ta - tum in mor - tis ex - a - mi - ne. in mor -
 ta - tum in mor - tis ex - a - mi - ne. in mor -

tis ex - a - mi - ne.
 tis ex - a - mi - ne.
 - tis ex - a - mi - ne.
 tis ex - a - mi - ne.